

MODEL 32P HORIZONTAL BEAM

The 32P was designed with crisp, clear telecentric optics and a precision solid cast iron workstage to be an instrument capable of handling almost any inspection requirement. This welded steel fabrication assures years of accurate, trouble free service.

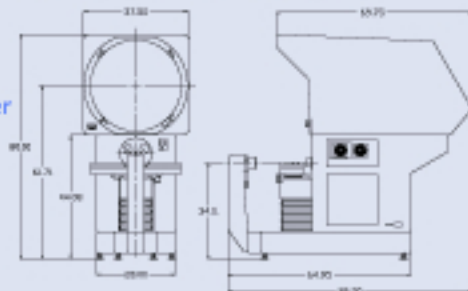
FEATURES:

- 32" (800mm) Vertical screen for optimum viewing
- Erect profile image with fully corrected surface reflection image
- High resolution ground glass screen with calibration reticle, 90 degree cross lines and chart clips
- Machined chart ring with vernier protractor, 1 minute graduation
- Coated telecentric parfocal optics
- Output for electronic rotary screen protractor with selectable 1 minute or 1/100 of a degree resolution
- 3 position rotary lens & condenser turret
 - (6 position optional)
- Quartz halogen profile light source 24V, 150W
- Bright 500W fiber optic surface illumination
- Integrated hood
- Nickel plated, completely cast iron workstage
 - Triple universal dovetails
 - 36" x 8" Overall size
 - Solid crossed roller stage system
 - 500 lbs. Capacity
 - 18" X Axis motorized adjustment
 - 10" Y Axis motorized adjustment
 - ±15 Degree true parfocal helix table adjustment, with 5 minute vernier
 - Computerized microstep motor controller with X and Y axes joystick control
- NIST traceable calibration certificate
- 2 Year limited warranty



	TECHNICAL SPECIFICATIONS	DIMENSIONS
Illumination	Profile: Built-in 24V/150W direct collimated halogen Surface: Built-in 24V/500W via fiber optics (x4)	
Screen size	32" (800mm) Ground glass with cross-lines	
Workstage	Cast iron, nickel plated, 36" x 8" triple dovetail	
Workstage travel	X - 18" (460mm) motorized Y - 10" (250mm) motorized Focus = 3" (75mm) manual, optional motorized True parfocal helix rotation = +/- 15 degree, 5 minute vernier 30"x14" x6" Maximum extended travel	
Workstage options	Within +/- 0.004mm (+I/L/20/.001)	
Workstage accuracy	Standard: 0.001mm/.00005"	
Linear scale resolution	Optional: 0.0005mm/.000020" +/- 1 Scale count (0.001mm/.00005")	
Repeatability	5x, 10x, 20x, 25x, 31.25x, 50x, 62.5x, 100x	
Coated telecentric lenses	Within +/- .10% Profile, +/- .15% Surface	
Optical accuracy	120V or 240V AC, 50/60 Hz, 10 Amp	
Power requirements	3950 lbs. / 1800 kg	
Weight		

Proudly made in the USA



VAN WERT

G.E. VAN WERT CO. INC.
461 BOSTON ST. TOPSFIELD, MA.
(978)-887-3389, GEVANWERT.COM



THE DORSEY ADVANTAGE

CONSTRUCTION FEATURES OF OUR MODEL 16H

Focus travel is always "optically coaxial"

Unique design features an intermediate plate that allows the focus axis to travel independently of the X axis

Ultra Precision Cast Iron Stage

Large capacity 10" x 6" - 150 lbs. stage system
Optional 20" X axis travel
Solid cast iron - no aluminum

Lens is mounted to cast iron stage - not to sheet metal case

Y Axis glass scale has zero backlash and is mounted on lens center line to greatly increase accuracy

3 axis measurement available

Single hand quick release on X axis

Stage is mounted to independent base fabrication not sheet metal case

Both profile and surface illumination bulbs are located in lamphouse

Solid rail crossed roller bearings in all axes

Case fabrication is powder coated not painted

Y axis drive is located directly under the center of gravity, and uses a composite steel/Delrin bevel gear set for accurate and silent operation

Base is fabricated from cast composite granite

X Axis glass scale has zero backlash and is mounted directly under focal plane to greatly increase accuracy

Weight bearing stage base is longer than stage top

Available with internal edge sensing ("IED")

This feature provides automatic edge detection without the viewing obstruction of a plexiglass arm on the screen. The IED target is aligned directly behind the screen crossline.

- IED is more accurate because the image is "read directly and is not diffused through ground glass screen.
- IED is also not subject to the stability and rigidity of a plastic arm, our IED sensor can't be bumped out of alignment.
- Cross calibration is not necessary when you switch between surface illumination and IED edge detection

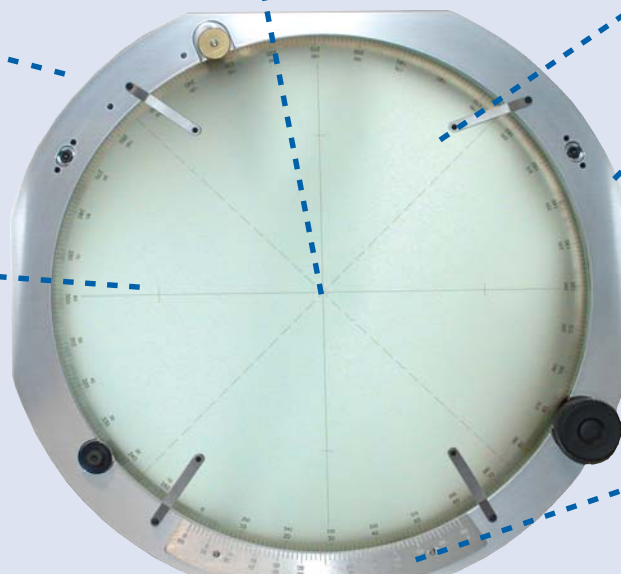
Screen is mounted in precision machined chart ring for increased rigidity, optical accuracy, and improved protractor operation

High resolution lapped glass screen

Recessed screen protects damage and eliminates contamination of internal optics

Built in calibration reticle for easy magnification verification

Large format vernier protractor with one minute graduations



Proudly made in the USA



WORK STAGE TOOLING CONTINUED



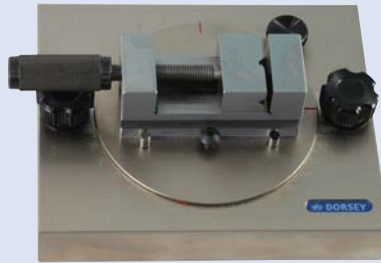
Part # ACC-BF \$105



Part # ACC-LBF \$135

FIXTURE BANKING PLATES

- Part# ACC-BF (6" x 1")
- Part# ACC-LBF (3" x 2.5")
- Precision ground steel
- Reversible for left or right bank
- Can be used on horizontal or vertical stages



Part # ACC-RV1 \$650



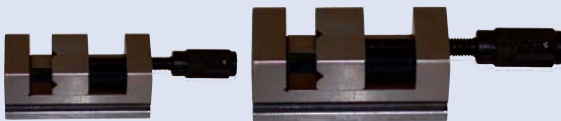
Part # ACC-RV2 \$975

ROTARY VICE STAGE

- Part# ACC-RV1 jaw opening of 1.25"
- Part# ACC-RV2 jaw opening of 2.12"
- Precision ground steel
- Positions vice in X, Y, or Z axis
- 360 degree rotation with 1 degree graduation

Part # ACC-V1 \$175

Part # ACC-V2 \$275



Part # ACC-VB1 \$245



PRECISION FIXTURE VICE

- Part# ACC-V1 jaw opening of 1.25"
- Part# ACC-V2 jaw opening of 2.12"
- Precision ground steel
- Vertical and horizontal V

PRECISION V BLOCK

- Part# ACC-VB1
- Precision V block
- Hardened and ground steel
- 90 degree V 2.7" high



Part # ACC-VF7X5 \$271

VERTICAL GLASS FIXTURE

- Part# ACC-VF7x5
- Used to mount flat parts on horizontal comparators
- 7" x 5" glass
- 2 Chart clips & V

Part # ACC-VBC2.5 \$455



Part # ACC-VBCHD \$1295



PRECISION V BLOCK & CENTER KIT

- Part# ACC-VBC2.5
- Matched ground hardened steel
- 90 degree V
- 2.7" tall
- 1" diameter centers with interchangeable Morse taper insert

HEAVY DUTY V BLOCK & CENTER KIT

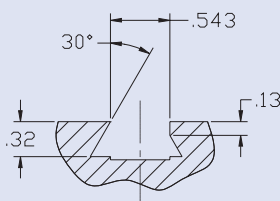
- Part# ACC-VBCHD
- Matched Ground cast iron
- 90 degree V
- 5" tall
- 1" diameter centers with interchangeable Morse taper insert

Part # ACC-RF \$1375



PRECISION ROTARY FIXTURE

- Part# ACC-RF
- Manual or motorized versions
- Scroll chuck available
- Collet set available
- 3 Jaw chuck available
- Wooden Storage Box



Typical universal dove tail detail used on all horizontal staging

Proudly made in the USA

