

XT-2000 VME Workstation

Video Measurement System

Increase Workflow Productivity

Reduce Scrap Materials

Improve Measurement Quality

Features

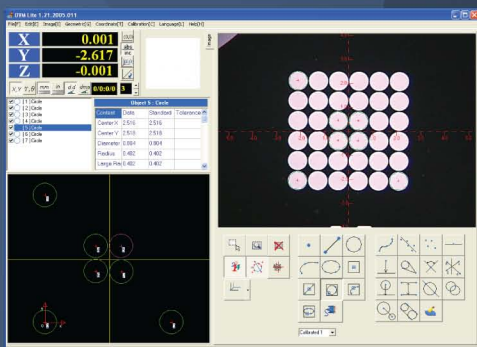
- Precision granite base and column
- LED Top and back lighting
- Quick release steel stage
- Zoom lens with detents
- 1/2" Color CCD camera
- Workstation table or bench top
- 1 year warranty



Sciencescope video measurement systems are specifically designed for non-contact measurement and inspection of small, delicate, or complex components. They are the next generation of traditional measuring microscopes and optical comparators. All Sciencescope measurement systems are ready to go out of the box for easy setup and use. We have a variety of models to best fit your needs.

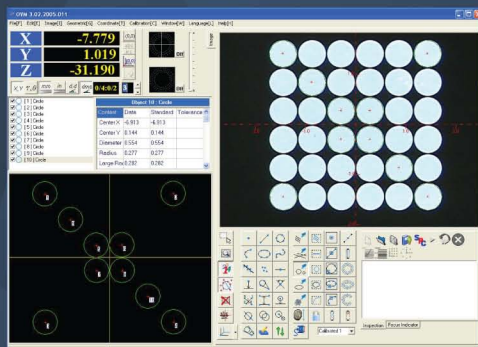
Measurement Software Options

1 OVM Lite Software



- Single point edge detection
- Multiple datums & image capture
- Cross hair indicates edge transition
- Import and export data
- Large live image screen
- Quick and easy measurement
- Measures circle, arc, angle, ellipse, B-splinecurve, center point, distance, and more.
- Includes PC, monitor, keyboard & mouse.

2 OVM Pro Software



- Program inspection sequence
- Focus tool
- Multi point edge detection
- Multiple datums & image capture
- Cross hair indicates edge transition
- Import and export data
- Large live image screen
- Quick and easy measurement
- Measures circle, arc, angle, ellipse, B-splinecurve, center point, distance, and more
- Includes PC, monitor, keyboard & mouse.

3 Metronics Quadra-Chek Geometric



- Multi feature geometric digital readout
- Part skew function
- Teach mode programming
- Multiple data outputs
- High visibility LCD display
- Familiar user friendly interface
- Measures circle, arc, angle, point, line, center point, distance, and more.

Specifications:

Model Numbers	XT-VME 6108 XYZ	XT-VME 8128 XYZ
Measuring Range	6" x 10" x 8"	8" x 12" x 8"
Measurement Software Options	OVM Lite or OVM Pro or Metronics Quadra-Chek Geometric	
Size (include base)	48"L x 29"D x 66"H	
Stage Load Capacity	66 lbs	
Standard Magnification	14x to 90x / Capable of up to 360x	
Illumination	LED Top and Bottom	
Power Supply	110V - 220V ± 5% 50/60HZ	
System Resolution	1 µm	
Accuracy (X/Y) at 20° C	(3+L/200) µm	
Repeatability	±1µm	
Camera	1/2" Color CCD w/ 480 TVLR	
Mounting Options	Table Top or Cabinet Stand or Workstation Table (Standard)	

SCIENSCOPE

5751 Schaefer Ave. Chino, CA 91710
 Tel (909) 590-7273
 Toll-Free (800) 216-1800
 Fax (909) 494-5513
 E-mail info@sciencescope.com

<http://www.sciencescope.com/>

Microsoft®, Windows®, Windows XP®, and Windows Vista are either registered trademarks or trademarks of Microsoft Corporation in the United States and/or other countries.

RECYCLE, REDUCE, REUSE
 PRINTED IN U.S.A.

